

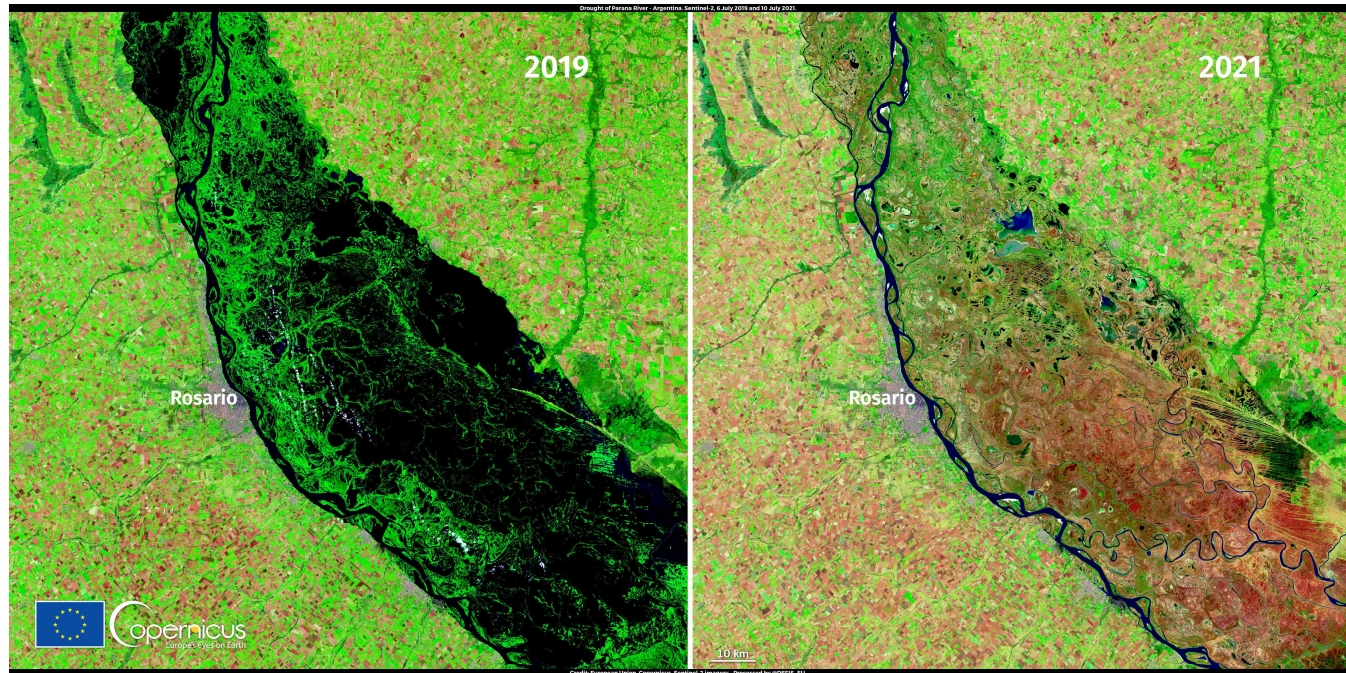


Emergency
Management

International Cooperation in Drought Reporting

The 2019-2021 extreme drought episode in La Plata Basin

A Joint Report from EC-JRC, CEMADEN, SISSA and WMO



Joint
Research
Centre

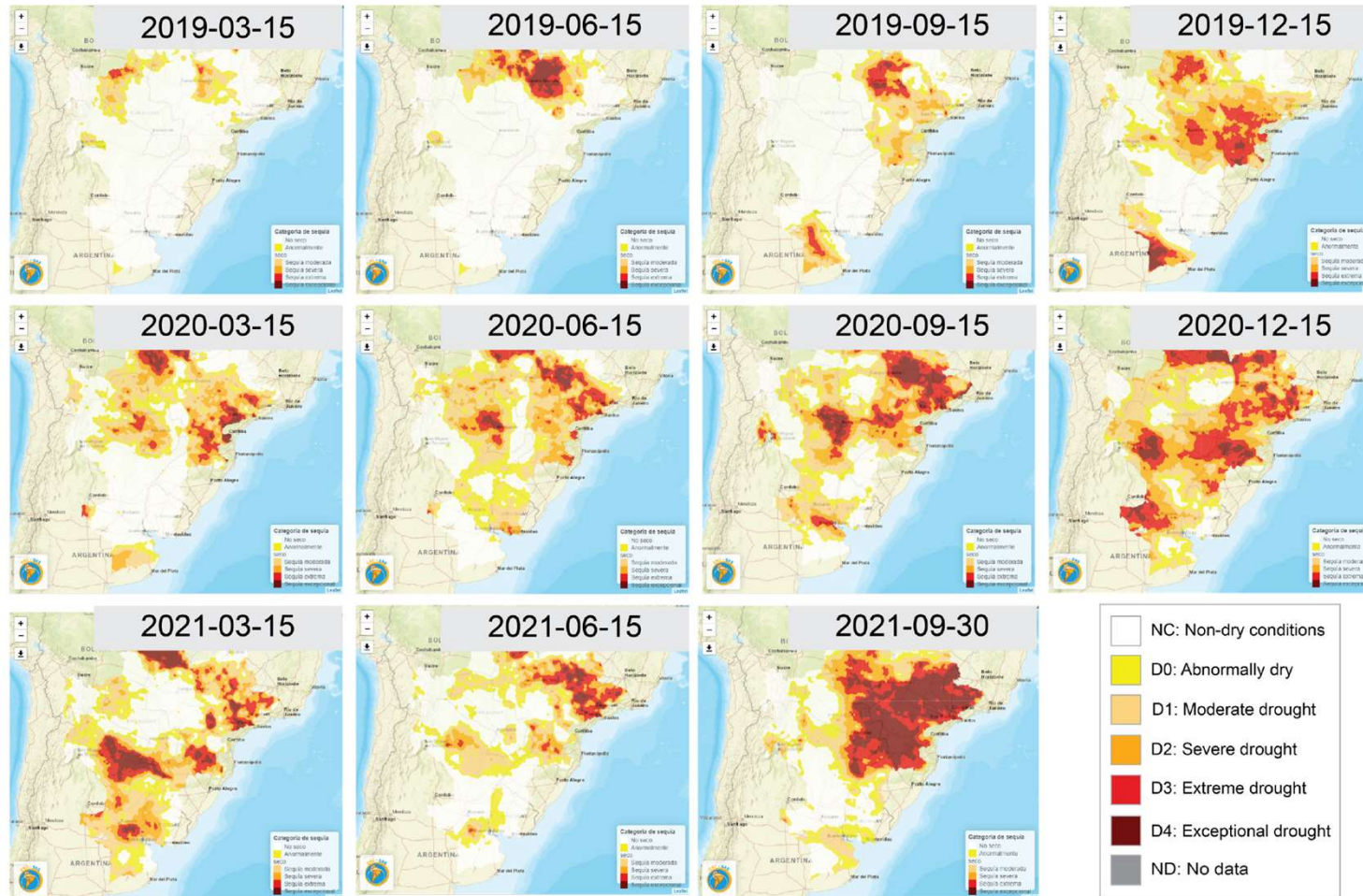




Emergency
Management

International Cooperation in Drought Reporting

Plata Basin Drought Categories (6-month periods)





Emergency
Management

International Cooperation in Drought Reporting

Conclusions

Multi annual drought
since 2019



Ecosystems damages and
agricultural production reduction
(-10% or more)



Forest fires increase (+200% or
more)



More than 1,2 million people
affected



Water consumption restrictions



Waterway transportation (-20% to
-50% of load capacity)



Hydropower energy production
(reduction up to 45%)

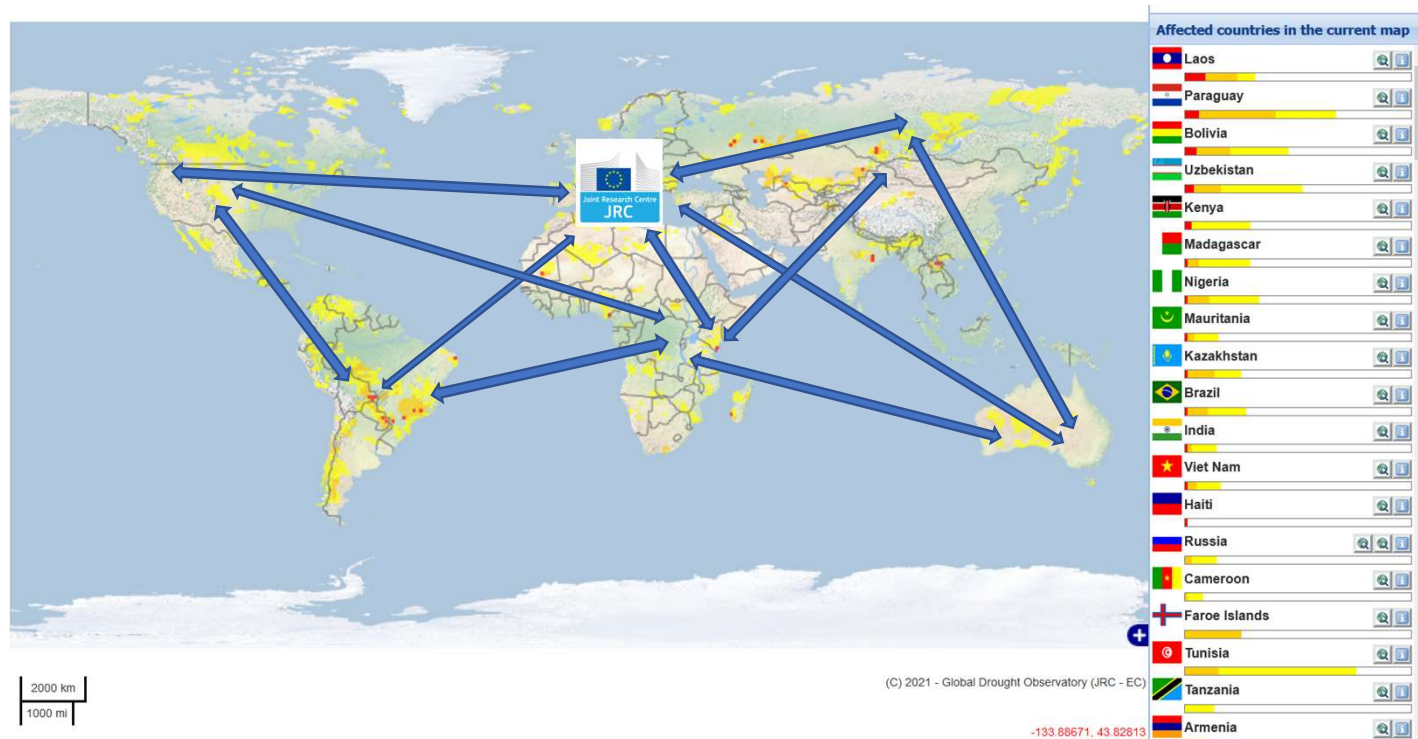


International Cooperation in Drought Reporting

Annual and special reports



- Local and calibrated indicators
- Reliable and detailed information on impacts
- Improvement of awareness and cooperation





Emergency
Management

International Cooperation in Drought Reporting



GDO - Global Drought Observatory



Emergency Management Service

Thank you